

Joy Squared

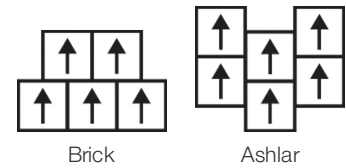
Collection	Joy Squared	
Numéro De Style	0993V	
Construction	Carreau De Vinyle De Luxe Commercial Lourd	
classe	Class III, Type B	
Finition	ExoGuard+®	
	Impérial	Métrique
Dimensions Nominales	24 in w x 24 in l	61 cm w x 61 cm l
Dimensions Réelles	24.00 in w x 24.00 in l	60.96 cm w x 60.96 cm l
Épaisseur De La Couche d'Usure	20 mil (0.02 in)	0.51 mm
Épaisseur Générale Du Produit	0.098 in	2.5 mm
Profil Du Bord	Bord Carré	
Installation Type	Dry Back	
Installation	Direct Glue	
Adhésif Recommandé	S150-95 Resilient Tile Spray, 4200 Resilient Tile 4 Gallon, 2200 Resilient Tile 4 Gallon or 4151 Multi-Use Premium 4 Gallon	



Emballage

Pièces Par Carton	17 pcs	
Surface Par Carton	68 sq ft	6.32 sq m
Poids Par Carton	57.79 lbs	26.21 kg

Méthodes d'Installation Conseillées



Coordination Des Produits

LVT: Joy Squared 12x48

Performance + Tests Et Essai

Résistance À La Chaleur (Astm F1514)	Passes
Résistance À La Lumière (Astm F1515)	Passes
Résistance Chimique (Astm F925)	Passes
Coefficient De Frottement (Astm D2407, Résistance Au Glissement)	≥0.5, meets the recommended static coefficient of friction for ADA walking surfaces

Test Reports may be included or listed by the manufacturing/inventory style number as opposed to the noted selling style number.

Garanties

[Limitée Commerciale De 15 Ans](#)

[Commercial 15 Year Underbed Bond Warranty](#)

Diversity, Equity & Inclusion

We believe all humans are equal. Individually and collectively, we need to proactively create and promote opportunities that give everybody an equal footing in life. We nurture an environment where every voice and perspective can be heard, and proactively promote accessibility and inclusivity inside our network and beyond. One proof point is our ability to meet the criteria of the Social Fairness pillar of the Cradle to Cradle Product Standard. At Shaw Industries, we promote supplier participation that is reflective of Shaw's diverse customer base and local community. More than 42% of our spend***** is with small and diverse businesses. We believe having a strong Supplier Diversity Program is strategic for bringing more innovation to our businesses and opening new markets for growth.

Attributs + Certifications

Health & Wellbeing

Material Ingredient Transparency

[Health Product Declaration \(HPD\) | 1000 ppm Disclosure](#)

Climate Impact

Environmental Product Declaration (EPD)

[Certifié Par Une Tierce Partie Conformément Aux Normes ISO 14025, EN 15804 Et ISO 21930:2017](#)

Total Recycled Content

30% (Pre-Consumer 30% | Post-Consumer 0%)

Global Product Assessment

[Environmental Guarantee* | Through Our Environmental Guarantee, Shaw Pledges to Transport And Recycle Any Shaw Manufactured Resilient Within The United States And Canada At No Cost to The Customer.](#)

[FloorScore® | Agréé](#)

CE Marking (EN 14041) | Certifié Par Un Tiers

Country of Origin | United States

Contribution Au Certificat Vert Leed

« Crédit MR : Divulcation et optimisation des produits de construction

« Crédit MR : Divulcation et optimisation des produits de construction

Crédit EQ : matériaux faibles émissions

Health Product Declaration (HPD) | 100 Ppm Disclosure

3rd Party Certified in Accordance with ISO 14025, EN 15804, & ISO 21930:2017

FloorScore Certified

Informations Supplémentaires

* To learn more about the recyclability of our products and our Environmental Guarantee, please visit shawcontract.com/sustainability.

[Installation Guidelines](#)

[Maintenance Guidelines](#)

Please visit www.shawcontract.com for the most current warranty information.

Specifications are subject to nominal manufacturing variance. Material supply and/or manufacturing processes may necessitate changes without notice.

This product is an exclusive design and may not be duplicated in any manner. Use of this design in the creation of another product design is also strictly prohibited.

*****Allowable spend is domestic (US) spend in categories in which we have diverse suppliers from which to choose. Compared to non-allowable spend which includes categories in which we do not have domestic, small or diverse suppliers available to meet our needs.

Visit shawcontract.com/testing for more information.

Available Colorways



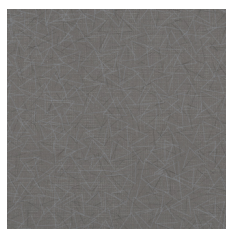
Snow Day 93100
V2 - Slight Variation



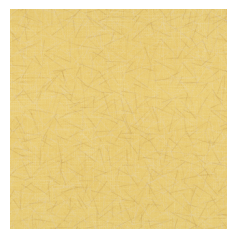
Beach 93160
V2 - Slight Variation



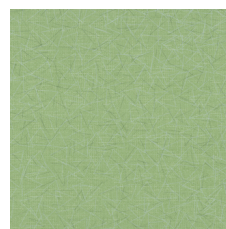
Playground 93250
V2 - Slight Variation



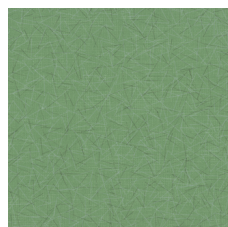
Song 93270
V2 - Slight Variation



Sun 93290
V2 - Slight Variation



Bouquet 93310
V2 - Slight Variation



Park 93360
V2 - Slight Variation



Grass 93375
V2 - Slight Variation



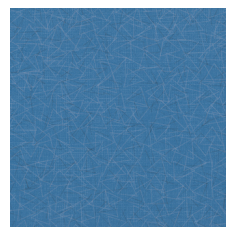
Treehouse 93385
V2 - Slight Variation



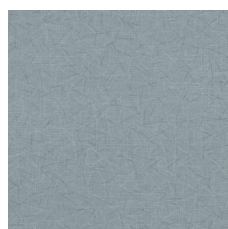
Spring 93390
V2 - Slight Variation



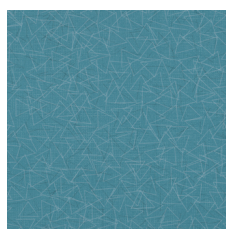
Sky 93405
V2 - Slight Variation



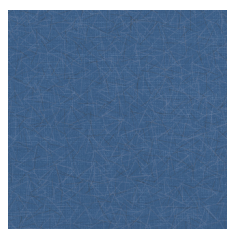
Pool 93410
V2 - Slight Variation



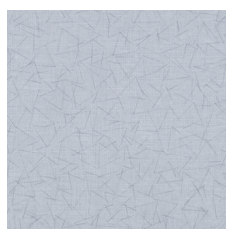
Bubble 93415
V2 - Slight Variation



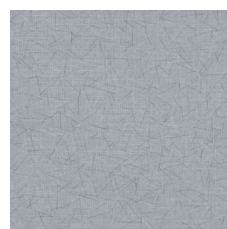
Summer 93470
V2 - Slight Variation



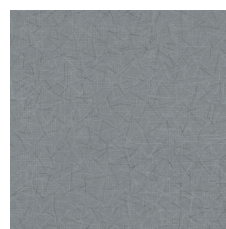
Snooze 93490
V2 - Slight Variation



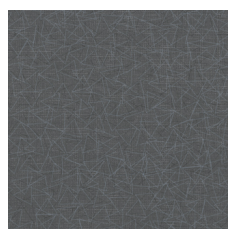
Holiday 93500
V2 - Slight Variation



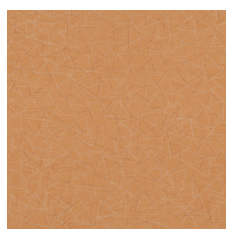
Tire Swing 93520
V2 - Slight Variation



Bicycle 93560
V2 - Slight Variation



Firefly 93595
V2 - Slight Variation



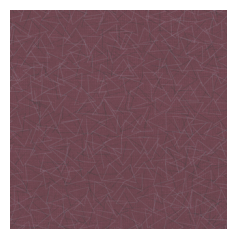
Firework 93680
V2 - Slight Variation



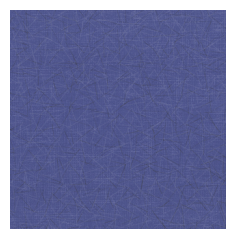
Backyard 93761
V2 - Slight Variation



Balloon 93890
V2 - Slight Variation



Carousel 93895
V2 - Slight Variation



Sprinkle 93995
V2 - Slight Variation

Color and Visual Variation Index

Shade and texture variation is inherent in all resilient products and can vary significantly from piece to piece. Samples should be used to assess color.

V1



Uniform Appearance

V2



Slight Variation

V3



Moderate Variation

V4



Substantial Variation

